

**vtech**<sup>®</sup>  
Baby

# User's Manual

## Too-Too Drivers<sup>®</sup> Fire Station



© 2014 VTech  
Printed in China  
91-009687-000 ©

**VTech understands that a child's needs and abilities change as they grow and with that in mind we develop our toys to teach and entertain at just the right level...**

## **vtech Baby**

**Toys that will stimulate their interest in different textures, sounds and colours**

### **I am...**

...responding to colours, sounds and textures

...understanding cause and effect

...learning to touch, reach, grasp, sit-up, crawl and toddle

*Birth-36 months*



## **Pre-School**

**Interactive toys to develop their imagination and encourage language development**

### **I want...**

...to get ready for school by starting to learn the alphabet and counting

...my learning to be as fun, easy and exciting as can be

...to show my creativity with drawing and music so my whole brain develops

*3-6 years*



## **Electronic Learning Computers**

**Cool, aspirational and inspiring computers for curriculum related learning**

### **I need...**

...challenging activities that can keep pace with my growing mind

...intelligent technology that adapts to my level of learning

...National Curriculum based content to support what I'm learning at school

*4-10 years*

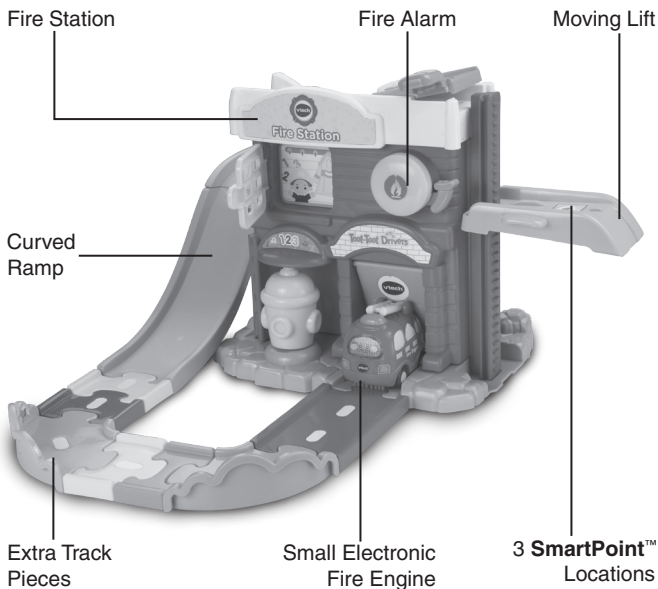


To learn more about this and other VTech® products, visit [www.vtechuk.com](http://www.vtechuk.com)

# INTRODUCTION

Thank you for purchasing the **VTech® Toot-Toot Drivers® Fire Station** play set learning toy!

Deploy the fire engine to save lives and put out fires! The **Toot-Toot Drivers® Fire Station** includes lots of manipulative features including a flip-up launcher, rolling fire hydrant, up and down lift and much more! Learning has never been so much fun.



## INCLUDED IN THIS PACKAGE

- One user's manual



- 1 **Toot-Toot Drivers® Small Fire Engine**
- 1 Station body
- 1 Station base



- 1 Lift platform
- 1 Fire hydrant
- 1 Long upper ramp
- 1 Long lower ramp



- 1 Straight track
- 1 Female connector track
- 2 90-degree tracks
- 3 Male/female connector tracks

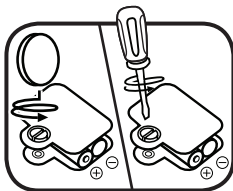
**WARNING:** All packing materials, such as tape, plastic sheets, packaging locks and tags are not part of this toy, and should be discarded for your child's safety.

**NOTE:** Please keep this user's manual as it contains important information.

## GETTING STARTED

### BATTERY INSTALLATION

1. Make sure the unit is turned **OFF**.
2. Locate the battery cover on the bottom of the vehicle. Use a coin or a screwdriver to loosen the screw.
3. Install 2 new 'AAA' (AM-4/LR03) batteries following the diagram inside the battery box. (The use of new alkaline batteries is recommended for maximum performance.)
4. Replace the battery cover and tighten the screw to secure.



### BATTERY NOTICE

- Use new alkaline batteries for maximum performance.
- Use only batteries of the same or equivalent type as recommended.
- Do not mix different types of batteries: alkaline, standard (carbon-zinc) or rechargeable (Ni-Cd, Ni-MH), or new and used batteries.
- Do not use damaged batteries.
- Insert batteries with the correct polarity.
- Do not short-circuit the battery terminals.
- Remove exhausted batteries from the toy.
- Remove batteries during long periods of non-use.
- Do not dispose of batteries in fire.
- Do not charge non-rechargeable batteries.

- Remove rechargeable batteries from the toy before charging (if removable).
- Rechargeable batteries are only to be charged under adult supervision.

### Disposal of batteries and product



The crossed-out wheeled bin symbols on products and batteries, or on their respective packaging, indicates they must not be disposed of in domestic waste as they contain substances that can be damaging to the environment and human health.



The chemical symbols Hg, Cd or Pb, where marked, indicate that the battery contains more than the specified value of mercury (Hg), cadmium (Cd) or lead (Pb) set out in Battery Directive (2006/66/EC).

The solid bar indicates that the product was placed on the market after 13th August, 2005.



Help protect the environment by disposing of your product or batteries responsibly.

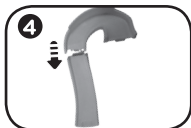
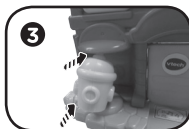
For more information, please visit:

[www.recycle-more.co.uk](http://www.recycle-more.co.uk)

[www.recyclenow.com](http://www.recyclenow.com)

## ASSEMBLY INSTRUCTIONS

With the **VTech® Toot-Toot Drivers® Fire Station** play set safety comes first. To ensure your child's safety, adult assembly is required.



1. Slot the lift into the groove on the side of the station body.
2. Attach the station body to the station base as shown.
3. Fix the extinguisher into position, you will hear a click sound when it locks into place.
4. Connect the 2 large tracks together.
5. Attach the track to the top of the station body.

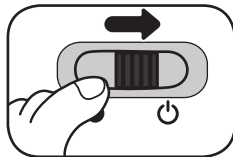
After the above steps, connect these pieces to the included track pieces. You can configure them into different shapes.



## PRODUCT FEATURES

### 1. ON/OFF/SWITCH

To turn the unit **ON**, slide the **ON/OFF SWITCH** on the small **Fire Engine** to the **ON (☺)** position. To turn the unit **OFF**, slide the **ON/OFF SWITCH** to the **OFF (●)** position.



### 2. SMARTPOINT™ LOCATIONS

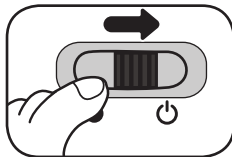
The **Toot-Toot Drivers® Fire Station** play set includes 3 **SmartPoint™** locations that can be recognised by **SmartPoint™** vehicles to trigger fun sounds, phrases and music. (**SmartPoint™** vehicles only, sold separately.)

### 3. AUTOMATIC SHUT-OFF

To preserve battery life, the **VTech® Toot-Toot Drivers®** small **Fire Engine** will automatically power-down after approximately 60 seconds without input. The unit can only be turned on again by pressing the light-up button or pushing the small **Fire Engine** quickly.

## SMALL FIRE ENGINE ACTIVITIES

1. Slide the **ON/OFF SWITCH** to turn the unit **ON**. You will hear fire engine sounds, a song and a phrase. The light will flash with the sounds.

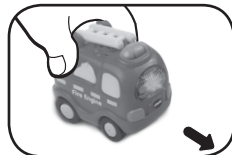




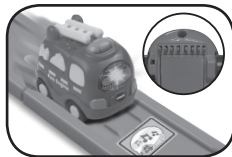
2. Press the **LIGHT-UP BUTTON** to hear fire engine sounds, songs and phrases. The light will flash with the sounds.



3. Push the fire engine to hear fun sounds and melodies. While the melody is playing, push the fire engine again to add in fun sounds on top of the melody. The light will flash with the sounds.

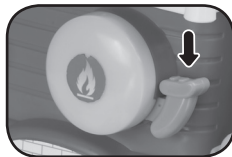


4. For added fun, the fire engine interacts with other **VTech® Toot-Toot Drivers®** play sets. Simply roll the Fire Engine over one of the play set's **SmartPoints™** to see the fire engine's light flash and to hear greetings, fun sounds, short tunes and sing-along songs (each play set sold separately).



## FIRE STATION ACTIVITIES

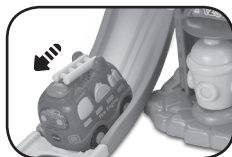
1. Slide the alarm lever to hear a mechanical alarm sound.



2. Move the lift up and down for mechanical play.



3. Launch the small fire engine down the curved ramp to the emergency.



## CARE & MAINTENANCE

1. Keep the unit clean by wiping it with a slightly damp cloth.
2. Keep the unit out of direct sunlight and away from any direct heat source.
3. Remove the batteries when the unit will not be in use for an extended period of time.
4. Do not drop the unit on hard surfaces and do not expose the unit to moisture or water.

# TROUBLESHOOTING

If for some reason the program/activity stops working or malfunctions, please follow these steps:

1. Please turn the unit **OFF**.
2. Interrupt the power supply by removing the batteries.
3. Let the unit stand for a few minutes, then replace the batteries.
4. Turn the unit **ON**. The unit should now be ready to play again.
5. If the product still does not work, replace with an entire set of new batteries.

If the problem persists, please call our Consumer Services Department on 01235 546810 (from UK) or +44 1235 546810 (outside UK) and a service representative will be happy to help you.

## IMPORTANT NOTE:

Creating and developing **VTech®** products is accompanied by a responsibility that we take very seriously. We make every effort to ensure the accuracy of the information which forms the value of our products. However, errors sometimes can occur. It is important for you to know that we stand behind our products and encourage you to call our Consumer Services Department on 01235 546810 (from UK) or +44 1235 546810 (outside UK) with any problems and/or suggestions that you might have. A service representative will be happy to help you.





## PRODUCT WARRANTY



Thank you for choosing this quality product from VTech. We hope it will bring many hours of entertainment, imaginative play and learning.

Join the VTech club online at [www.vtechuk.com](http://www.vtechuk.com)

1. The product detailed above is covered by a one year warranty from the date of purchase, against any defects in materials or workmanship.
2. The product may be returned to the place of purchase. Alternatively the product can be returned to VTech Electronics Europe plc (see address below), with proof of purchase, without proof of purchase no replacement will be provided.
3. VTech Electronics Europe plc will examine the product and if it is found to be defective due to faulty materials or workmanship, will replace the product at their discretion.
4. If the product covered by this warranty is damaged due to misuse, modification or unauthorised repair, or because of faulty batteries, battery discharge or incorrect electrical connections, then this warranty becomes void.
5. This warranty is personal to the original purchaser and is not transferable.
6. Breakages to the LCD screen are not covered by the warranty.
7. Returns to VTech Electronics Europe plc should include a cheque or postal order for £1.50 towards the cost of return postage and packaging.
8. Products returned to VTech Electronics Europe plc, should be addressed as follows and packed carefully to avoid damage in transit (Please do not include batteries or adaptor).  
Please include details of the fault together with your name and address.

VTech Electronics Europe plc, c/o Tablogix Limited, 200 Milton Park, Abingdon, Oxon OX14 4TA

**THIS WARRANTY IS OFFERED AS AN EXTRA BENEFIT AND DOES NOT AFFECT CONSUMERS' STATUTORY RIGHTS.**

This warranty is valid for the UK and Eire only. For products purchased outside the UK and Eire, please contact your local distributor or place of purchase.

